

PLEASE CHECK WWW.MOLEX.COM FOR LATEST PART INFORMATION

Part Number: [0357252010](#)
Status: **Active**
Description: 6.35mm (.250") Tab Slip-On Wire-to-Wire Terminal, Male, 18x2 AWG, Post-Tin Plated

Documents:

[Drawing \(PDF\)](#) [RoHS Certificate of Compliance \(PDF\)](#)
[Product Specification PS-35519-001 \(PDF\)](#)

General

Product Family	Crimp Terminals
Series	35725
Crimp Quality Equipment	Yes
Product Name	N/A

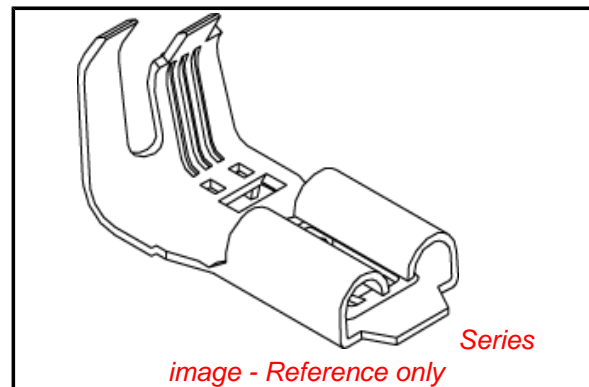
Physical

Gender	Male
Material - Metal	Brass
Material - Plating Mating	Tin
Material - Plating Termination	Tin
Packaging Type	Reel
Plating min: Mating (µin)	40
Plating min: Mating (µm)	1
Plating min: Termination (µin)	40
Plating min: Termination (µm)	1
Wire Insulation Diameter	3.60mm (.142") max.
Wire Size AWG	18+18
Wire Size mm ²	N/A

Material Info

Reference - Drawing Numbers

Product Specification	PS-35519-001
Sales Drawing	SD-35725-***0



EU RoHS

**ELV and RoHS
Compliant**
**REACH SVHC
Contains SVHC: No**
**Halogen-Free
Status**

China RoHS



**Need more information on product
environmental compliance?**

Email productcompliance@molex.com
 For a multiple part number RoHS Certificate of Compliance, [click here](#)

Please visit the [Contact Us](#) section for any non-product compliance questions.

Search Parts in this Series
[35725Series](#)

Mates With
[35725-36xx](#)

DO NOT SCALE DRAWING
DIMENSION IN METRIC

B

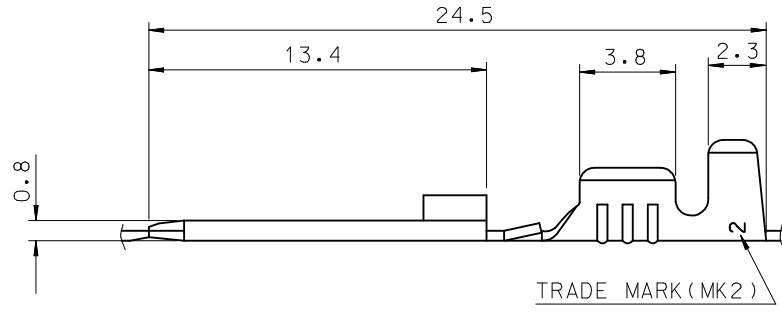
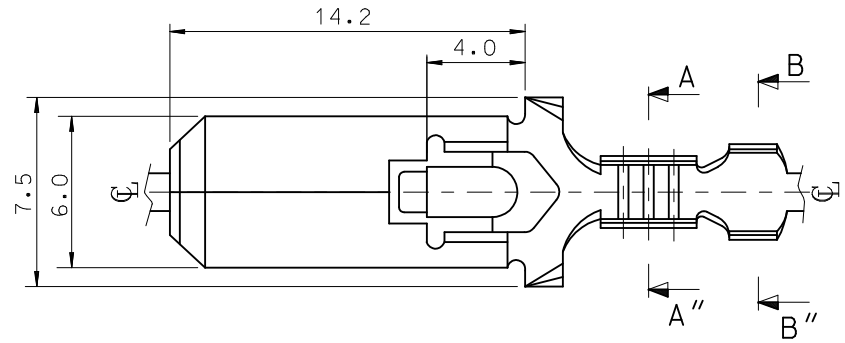
C

PROJECT NO.

SIMILAR ITEM

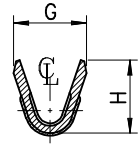
DWG. 10.

SD_35725-30*0/18*0/19*0

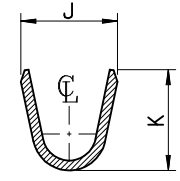


NOTES

1. MATERIAL: BRASS, 0.39mm THICK'
2. FINISH: UNPLATED (35725-3000/1800/1900/2000)
POST-TIN PLATED (35725-3010/1810/1910/2010)
3. MATING RECEPTACLE TERMINAL: 35725-36*0(L)
35725-37*0(M)
35725-38*0(S)



SECTION A-A''



SECTION B-B''

ENG.NO.	G	H	J	K	WIRE RANGE	SIZE
35725-30*0	2.85	2.9	3.8	4.0	AWG#22-#20	S
35725-18*0	3.4	3.6	5.2	5.2	AWG#18-#14	M
35725-19*0	5.3	4.5	6.2	5.6	AWG#14-#12	L
35725-20*0	5.3	4.5	6.6	4.8	AWG #18x2	XL

REVISED EC NO. KOR2000-0007 DRW:W.Y.YANG 00/02/08 CH'K: APPR:	DESCRIPTION MAJOR = 0 CRITICAL C = 0	GENERAL TOLERANCES: (UNLESS SPECIFIED)		SCALE 5:1	DESIGN UNITS <input checked="" type="checkbox"/> mm <input type="checkbox"/> INCH	DIMENSIONS: <input type="checkbox"/> mm <input type="checkbox"/> INCH <input checked="" type="checkbox"/> mm ONLY	SHT REV	
		4 PLACES ±0. ±. 3 PLACES ±0. ±. 2 PLACES ±0.30 ±. 1 PLACE ±0.30 ±.	DRAWN BY & DATE W.Y.YANG 93/03/05	TITLE: .250 SLIP-ON TAB			THIRD ANGLE PROJECTION	REVISIONS CAD ONLY
		ANGULAR: ± 3°	APPROVED BY & DATE C.W.LEE 93/03/05	MOLEX INCORPORATED KOREA			SHEET NO. 10F1	
C	REV	DRAFT WHERE APPLICABLE MUST REMAIN WITHIN DIMENSIONS		CAD FILENAME S7253000.DGN	MATERIAL NO. SEE CHART	DRAWING NO. SD-35725-***0	SIZE B	